



Wireless-N Wi-Fi Repeater/ Extender

Quick Installation Guide

Introduction

The *Wireless-N Wi-Fi Repeater/Extender* can extend and increase signal strength for 802.11n/g/b wireless networks.

Features and Benefits

- Compact and portable for business travelers
- Supports 2.4GHz WLAN networks and complies with IEEE 802.11n/g/b
- Switchable wireless operation modes: Repeater or Access Point (AP)
- Supports WLAN security with WPA, WPA2, WEP (128/64) and WPS
- Data transmission rate up to 300Mbps

System Requirements

- 802.11n/g/b Wireless LAN network
- 110-230V AC electrical outlet

Package Contents

- *Wireless-N Wi-Fi Repeater/Extender*
- RJ-45 Ethernet cable
- 3 Interchangeable wall plugs
- Quick Installation Guide

Layout

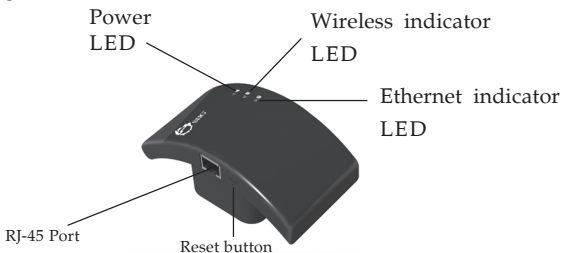


Figure 1: Layout

- **Power LED:** Steady red light when power adapter is connected
- **Wireless indicator LED:** Green light when wireless activity is detected
- **LAN indicator LED:** Green light when Ethernet cable is connected
- **Reset button:** Press and hold for 10 seconds to go back to default settings

Start Using the *Wireless-N Wi-Fi Repeater/Extender*

1. Plug the *Repeater/Extender* to a reliable AC power outlet.
2. Connect your *Repeater/Extender* to your computer using an RJ-45 Ethernet cable.
3. Configure your system's IP address to be in the same network domain with the *Repeater/Extender*.
 - IP address: 192.168.10.x (x = any number from 2-254)
 - Subnet mask: 255.255.255.0
 - Default gateway: 192.168.10.1
 - DNS server addresses: Leave blank

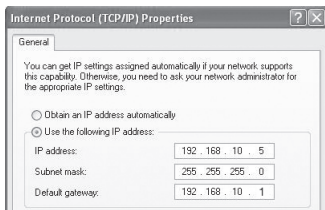


Figure 2

4. Open a browser and enter **192.168.10.1** into the address bar and hit **Enter**.

Type **admin** for both *User Name* and *Password*, then click **OK**.

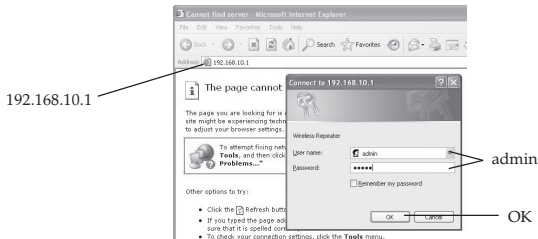


Figure 3

5. Follow the instructions below to set up Repeater or AP mode.

Repeater Mode Configuration

This mode extends and boosts wireless signals in hard to reach places.

1. Click **Setup Wizard** on the left side bar, select **Wireless Repeater Mode**, click **Next**.



Figure 4

2. Click **Repeater - OneKey Setting**.
3. Select the desired wireless network, then click **Next**.



Figure 5

4. If the selected wireless network has a password, enter it into the **Pre-Shared Key** field, click **Apply and Reboot**, then **OK**.



Figure 6

5. If successfully configured, the configuration settings/status will show **Repeater** and the *State* is **Connected**. See **Figure 7**.

Note: If the configuration fails, repeat steps 1-4, click **Reboot** at the left side bar to reboot the *Repeater/Extender*.

WIRELESS - REPEATER
IEEE 802.11N 2.0

Access Point Status

This page shows the current status and some basic settings of the device.

System	
Uptime	8day 0h:2m:15s
Firmware Version	RPL_2.5.NL_v4.0910
Build Time	Mon Sep 10 11:18:43 CDT 2012
Operation Mode	Bridge

Wireless Configuration	
Mode	Repeater (Infrastructure Client)
Band	2.4 GHz (B+G+N)
SSID	SHG
Channel Number	4
Encryption	WPA2
BSSID	00:26:5a:05:3d:a6
State	Connected

Wireless Repeater Interface Configuration	
Mode	AP
Repeater SSID	Wi-Fi-Repeater1
Encryption	WPA2
recon	80:3f:66:9f:66:66

Repeater

Connected

Figure 7

- Wireless AP **Wi-Fi Repeater-1** is ready for connection now.

NOTE: The AP name can be changed through **Basic Settings**. See page 8.

AP Mode Configuration

This mode gives a non-wireless connection wireless-N capabilities.

- In the main menu, click **Setup Wizard** on the left side bar, select **Standard Wireless AP Mode**, click **Next**.
- Click **AP - OneKey Setting**.
- The *Repeater/Extender* will be configured automatically to the AP mode. see **Figure 8**.

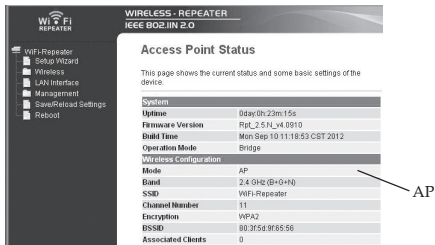


Figure 8

- In the main menu, click **Security** (under **Wireless**) on the left side bar, type in your password in the **Pre-Shared Key** field and click **Apply Changes**. Note that **WPA2** is default encryption method and is recommended.



Figure 9

NOTE: Security code is recommended. Skip this step if it is not needed.

5. Connect the *Repeater/Extender* to your router with an RJ-45 cable. Wireless AP **Wi-Fi Repeater** is ready for connection now.

NOTE: The AP name can be changed through **Basic Settings**. See **Basic Settings** in the next section.

Wireless - Basic Settings

1. In the main menu, click **Basic Settings** (under Wireless) on the left side bar.
2. Change the basic settings, then click **Apply Changes**.

Disable Wireless LAN Interface

Mode: AP

Network Type: Infrastructure

SSID of AP: WiFi-Repeater

Enable Universal Repeater Mode (Acting as AP and client simultaneously)

SSID of Extended Interface: WiFi-Repeater1

Band: 2.4 GHz (B+G+N)

Channel Width: 40MHz

Control Sideband: Upper

Channel Number: 11

Broadcast SSID: Enabled

WMM: Enabled

Data Rate: Auto

Associated Clients: Show Active Clients

Enable Mac Clone (Single Ethernet Client)

Apply Changes Reset

Figure 10

Wireless - WPS

1. In the main menu, click **WPS** (under Wireless) on the left side bar.
2. Click **Start PBC** to enable the WPS function.

Wi-Fi Protected Setup

This page allows you to change the setting for WPS (Wi-Fi Protected Setup). Using this feature could let your wireless client automatically synchronize its setting and connect to the Access Point in a minute without any hassle.

Disable WPS

Apply Changes Reset

WPS Status: Configured UnConfigured
Reset to UnConfigured

Self PIN Number: 04461661

Push Button Configuration: Start PBC Start PIN

Client PIN Number: Start PIN

Current Key Info:

Authentication	Encryption	Key
WPA2 PSK	AES	12345678

Figure 11

Application

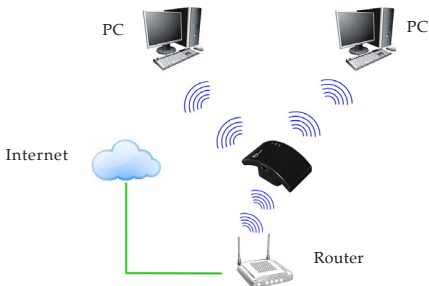


Figure 12 Repeater Mode

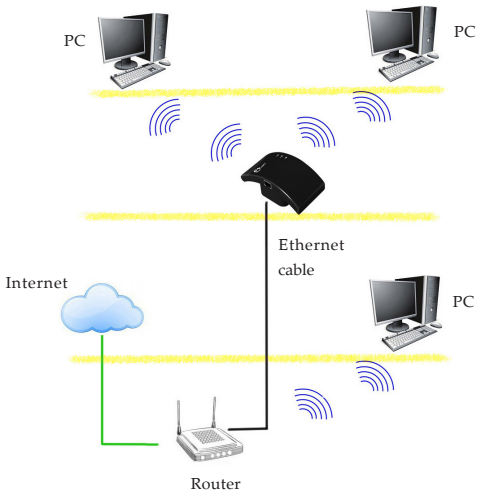


Figure 13 AP Mode

Technical Support and Warranty

QUESTIONS? SIIG's **Online Support** has answers! Simply visit our web site at www.siig.com and click **Support**. Our online support database is updated daily with new drivers and solutions. Answers to your questions could be just a few clicks away. You can also submit questions online and a technical support analyst will promptly respond.

SIIG offers a 2-year manufacturer warranty with this product. This warranty covers the original purchaser and guarantees the product to be free of any defects in materials or workmanship for two (2) years from the date of purchase of the product.

SIIG will, at our discretion, repair or replace (with an identical product or product having similar features and functionality) the product if defective in materials or workmanship. This warranty gives you specific legal rights, and you may also have other rights which vary from state to state. Please see our web site for more warranty details.

If you encounter any problems with this product, please follow the procedures below.

A) If it is within the store's return policy period, please return the product to the store where you purchased from.

B) If your purchase has passed the store's return policy period, please follow the steps below to have the product repaired or replaced.

Step 1: Submit your RMA request.

Go to www.siig.com, click **Support**, then **REQUEST A PRODUCT REPLACEMENT** to submit a request to **SIIG RMA** or fax a request to 510-657-5962. Your RMA request will be processed, if the product is determined to be defective, an RMA number will be issued.

Step 2: After obtaining an RMA number, ship the product.

- Properly pack the product for shipping. All accessories that came with the original package must be included.
- Clearly write your RMA number on the top of the returned package. SIIG will refuse to accept any shipping package, and will not be responsible for a product returned without an RMA number posted on the outside of the shipping carton.
- You are responsible for the cost of shipping to SIIG. Ship the product to the following address:
SIIG, Inc.
6078 Stewart Avenue
Fremont, CA 94538-3152, USA
RMA #: _____
- SIIG will ship the repaired or replaced product via Ground in the U.S. and International Economy outside of the U.S. at no cost to the customer.

About SIIG, Inc.

Founded in 1985, SIIG, Inc. is a leading manufacturer of IT connectivity solutions (including Serial ATA and Ultra ATA Controllers, FireWire, USB, and legacy I/O adapters) that bridge the connection between Desktop/ Notebook systems and external peripherals. SIIG continues to grow by adding A/V and Digital Signage connectivity solutions to our extensive portfolio. SIIG products offer comprehensive user manuals, many user-friendly features, and are backed by an extensive manufacturer warranty. High quality control standards are evident by the overall ease of installation and compatibility of our products, as well as one of the lowest defective return rates in the industry. SIIG products can be found in computer retail stores, mail order catalogs, through major distributors, system integrators, and VARs in the Americas and the UK, and through e-commerce sites.

PRODUCT NAME

Wireless-N Wi-Fi Repeater/Extender

**FCC RULES: TESTED TO COMPLY WITH FCC PART 15, CLASS B
OPERATING ENVIRONMENT: FOR HOME OR OFFICE USE**

FCC COMPLIANCE STATEMENT:

This device complies with part 15 of the FCC Rules. Operation is subject to the following two conditions: (1) This device may not cause harmful interference, and (2) this device must accept any interference received, including interference that may cause undesired operation.

THE PARTY RESPONSIBLE FOR PRODUCT COMPLIANCE

SIIG, Inc.
6078 Stewart Avenue
Fremont, CA 94538-3152, USA
Phone: 510-657-8688

Wireless-N Wi-Fi Repeater/Extender is a trademark of SIIG, Inc. SIIG and the SIIG logo are registered trademarks of SIIG, Inc. All other names used in this publication are for identification only and may be trademarks of their respective owners.

April, 2013

Copyright © 2013 by SIIG, Inc. All rights reserved.